



No Use

AI is not permitted on this assignment for any reason

Reading: You must complete all reading without any help from AI.

Content Creation: You must complete the assignment using only your own knowledge, skills, and creativity.

Problem-Solving: You must solve all parts of assigned problems using only your own knowledge, skills, and reasoning.

No disclosure statement required



AI as a Thought Partner

AI can be used only for initial inquiry, brainstorming, and to help generate ideas.

Reading: You must read the original text as assigned, but AI may be used to help you understand the text.

Content Creation: You can use AI tools only for initial idea-gathering, and not to complete the assignment.

Problem-Solving: You must generate your own solutions to problems, but may use AI to suggest strategies, explore concepts, and provide helpful ideas.

Students must disclose AI usage. Copies of chat(s) must be submitted



AI as an Editor

AI can be used to edit and receive feedback on original content.

Content Creation: You can use AI feedback to help edit and revise your original content.

Problem-Solving: You may use AI to improve the clarity, organization, and simplicity of a solution you have created, but not to correct errors.

Students must disclose AI usage. Copies of chat(s) must be submitted



AI as an Analyst

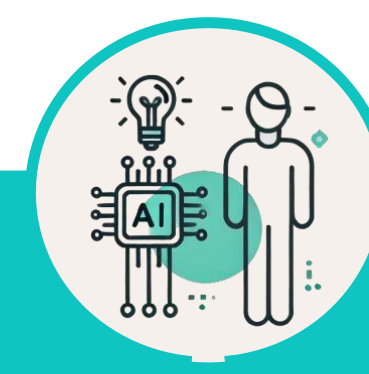
AI can be used to analyze data, identify patterns, and identify themes.

Reading: AI may be used to help you analyze the reading, but you must read the text assigned.

Content Creation: AI can be used to help you create visualizations or graphs to help identify new patterns or themes, but you must complete the assignment yourself.

Problem-Solving: You may use AI to help identify mathematical processing errors and misapplication of principles, but you must correct your work by yourself.

Students must cite AI created content in the appropriate format. Copies of chat(s) must be submitted



AI as a Co-Creator

AI can be used to help complete assignments and projects.

Reading: You can create and read an AI summary instead of reading the original text.

Content Creation: You can use AI to create parts of an assignment as permitted. You need to review AI-created work to ensure its accuracy.

Problem-Solving: You may use AI to generate solutions when solving problems. You must check and verify your solution.

Students must cite AI created content in the appropriate format. Copies of chat(s) must be submitted